



Cast Iron Steel Scaffolding Accessories Wing Nut Anchor Nut For Tie Rod / Anchor Plate

Our Product Introduction

for more products please visit us on greycastironcasting.com

Basic Information

- Place of Origin: Ningbo China
- Brand Name: NC891
- Certification: ISO 9001,CE
- Model Number: 891
- Minimum Order Quantity: 1 pcs
- Packaging Details: Pallet
- Delivery Time: 25 days
- Supply Ability: 200,000 pcs



Product Specification

- Product Name: Wing Nut
- Application: Formwork
- Material: Cast Steel, Ductile Iron
- Type: Formwork Tie Nut
- Finish: Galvanized
- HS Code: 7308400000
- Highlight: cast iron steel scaffolding accessories nut,
cast iron steel scaffolding wing nut,
cast iron steel scaffolding anchor nut



More Images



Product Description

Cast Iron Steel Scaffolding Accessories Wing Nut Anchor Nut For Tie Rod / Anchor Plate

Description

Wing nuts and Tie rods as a whole facility are used widely in formwork construction. There are single wing nut, butterfly wing nut, two anchor wing nut, three anchor wing nut, combination wing Nut. Because of this structure, wing nuts can be easily tightened and loosened by hand without any tools. Wing nuts have casting and forging types by processing technology , common thread size is 17mm / 20mm thread size is 17mm/20mm.

Application

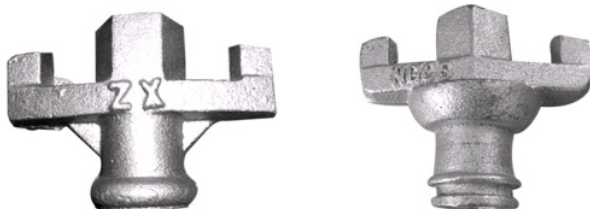
It is high quality construction formwork fastener and has been used to many large projects like high rise building, bridge, hydroelectricity, nuclear power projects.

Features

1. High tensile strength.
2. High process precision, precise thread.
3. Surface treatment: It can be electroplated, hot dip galvanized or according to the drawing, sample or special requirement of clients.

Product Details

Item	Construction Hardware
Name	Anchor Nuts For Formwork Scaffoldings
Raw material	Ductile Iron, Steel
Process	Precision Casting or Sand Casting
Diameter of Plate	70mm,80mm,90mm,100mm,110mm
Suitable for	with 15/17mm tie rod
Unit weight	0.28/0.35/0.45/0.56/0.61/0.65/0.66/0.7/0.73kg
Types	Butterfly nut, Combination nut, Hex nut, Steel cone
Surface finish	silver or Golden cold Galvanized or by painted
Tensile Resistance	90-190KN
Marking(Logo)	any logo is available on the nuts
Package	by Woven bag and steel pallet
Delivery time	25 days upon the prepayment
Production Capacity	3000pcs per day
Payment term	T/T or L/C



About Us

We are a manufacturer of construction formwork accessories and building fastener such as form tie, pin, wedge pin, hex nut, flat tie, wall tie, tie rod, wing nut, scaffold coupler, u-clip, expansion anchor bolt, chain roller, implosion nut, cutting wire and other non-standard fastener most of them used in building channel bridge construction to fix formwork.

We can provide services in designing of Scaffolding and Formwork products. We provide Technical services to clients in order to assist them with their requirements.

Our main objective is to provide the most secure, economical and easy to use scaffolding and formwork systems to satisfy our clients requirements.

Any Other Related Products We made

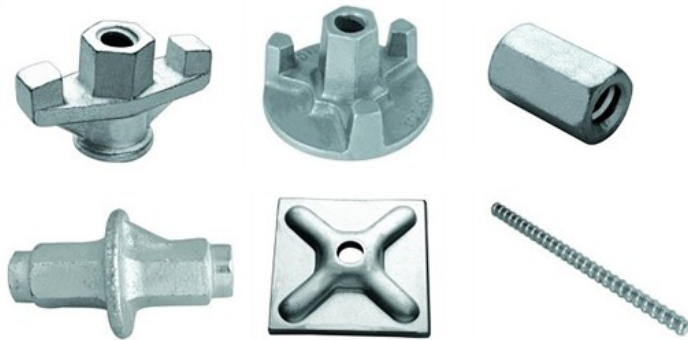
Ringlock, Cuplock, Kwikstage, Frame Scaffolding
Formwork clamp, Adjustable Shoring Prop, Traffic Barrier.

Main Market

South America, Eastern Europe, North America, Southeast Asia, Africa, and Arabic country.

Our Advantages

1. A professional scaffolding products and hardware manufacturer with 25 years of experience.
2. Strong production capacity.
3. High quality and competitive price.
4. Strictly Quality Control system.
5. 100% finished products are checked before shipment.
6. Provide Technical services to clients in order to assist them with their requirement.
7. Experienced Technical Team.
8. Can ask for Technical Details of products.



FAQ

Q1. What do you do?

A: We design and manufacture formwork and scaffolding products used for pouring concrete structure in the field of housing, high rise buildings, towers, sports stadiums, bridges, hydropower stations, industrial structures etc.

Q. Is the sample free?

Yes

Q. How about the delivery?

We ensure your goods can be delivered safely and on time.



Sunrise Foundry CO.,LTD



+86-15067447509



sales@greycastironcasting.com



greycastironcasting.com